



Hull Truck Theatre, Derby Theatre, Octagon Theatre Bolton,
and Theatre by the Lake present

Of Mice and Men

by John Steinbeck

SHOW EXPERIENCE GUIDE

This show experience guide is designed for anyone who may want to familiarise themselves with the show, *Of Mice and Men*, before their visit.

The guide includes a visual story, images of the cast and information about light/sound effects and show content.

We also have a venue experience guide which includes photos and information about the theatre itself and what to expect when you arrive and during your visit.

[CLICK HERE TO VIEW OUR VENUE EXPERIENCE GUIDE.](#)

SHOW RUNNING TIME: 2 hours 25 mins (including a break)

GUIDE CONTENT

- Social story
- About the show
- The stage and set
- Cast
- Key characters
- The story and it's themes
- Light/sound effects and any sensitive content
- Relaxed performances and pre-show visit
- Sensory items

Social Story

Many people enjoy seeing stories told by actors at the theatre. This is often called a production. The production of 'Of Mice and Men' is a story about two friends named George and Lennie who work on a ranch but have dreams of owning their own land. The story is set in America in the 1930s. The characters are all played by actors who are pretending to be ranch workers.

To make the production more interesting the stage production team use items called props. These are sometimes unusual to have indoors. They are sometimes in unusual places. It may be hay bales, wooden crates and barrels, or ropes. They are there to help to create an interesting stage set. One of the characters in the show has a dog. The dog is not real and is represented by a puppet.

The actors often enter and exit from the back of the stage. These exits lead to the backstage area where actors can get changed. The stage and these areas are only for the actors use.

Special effects are also used to create an interesting production. These may be occasional loud noises and changing lights.

Many people enjoy these effects. Some people like to bring their ear defenders, sunglasses or a favourite smell sprayed on a tissue, to help them manage these moments and enjoy the production more.

The production team like to sometimes include words or phrases that are not true or may seem unkind to one of the other actors. This is to help tell the story and is not real. The actors are pretending.

The people watching the production are called the audience. At the end of the show, the audience will clap to show that they enjoyed the production.

Many people enjoy the production of 'Of Mice and Men'. We hope you do too!

About the show

The play is set in the United States of America in the 1930s, during the Great Depression - a time when people were very poor and struggled to find work. The story follows Lennie and George, two friends looking for work on a ranch.

The play is about friendship, migration, and prejudice.

The stage and set

When you enter the theatre, you will see the stage and set. The actors will come out on to the stage to perform. All the items of scenery, furniture and the objects on the stage are called the set.

The floor and back wall are made of wooden slats. Parts of the back wall can open like doors and windows, and the whole wall can open to look like big barn doors. Changes in lighting as well as changes to the set are used to show different places.



The Cast



This is Wiliam Young who plays Lennie



This is Luke Richards who plays Lennie



These actors will play Lennie at different performances



This is Liam King who plays George



This is Jeff Alexander who plays Crooks



This is Emma Charlton who plays Curley's Wife



This is John Elkington who plays The Boss

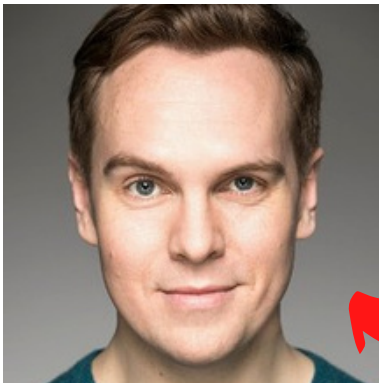




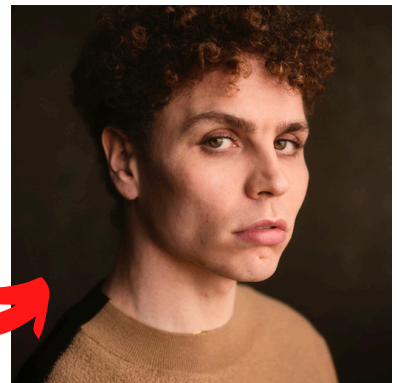
This is Tom Fletcher who plays Carlson



This is Afton Moran who plays Whit



This is Laurence Pears who plays Slim



This is Stefan Race who plays Curley



This is Ben Wilson who plays Candy



Key Characters

Here are the main characters in the play. Some of the actors play different characters, and so there are smaller characters (not named here) who appear on stage too.



George

A small and intelligent ranch worker with dreams to own his own land. He is best friends with Lennie and often looks after him.



Lennie

A large ranch worker who is sweet natured but cannot always control his own strength. He is best friends with George. Lennie is learning disabled.

Please note - these two actors will be playing the role of Lennie at different performances.



Curley

The Boss's son who has a lot of power over the other workers. He is very aggressive and violent.



Curley's Wife

Although she is married, Curley's Wife flirts with the other men that work on the ranch. She does not like her husband and feels lonely.



Crooks

A ranch worker who experiences a lot of racism. He is resentful and bitter towards the others.



Slim

A ranch worker who is well respected by the other workers. He is calm and thoughtful.



Candy

A ranch worker who is disabled from a work accident. His only real companion is his dog.



Candy's Dog

The dog is represented by a puppet.



Carlson

A ranch worker who does not like Candy's dog.



Whit

A ranch worker.



The Boss

The man in charge of the ranch.



The Story

George and Lennie stop by a pond to camp, on their way to a ranch where they are starting work soon.

Lennie has a learning disability and is very dependent on George. We learn that Lennie loves petting soft animals but doesn't realise his own strength and often accidentally kills them.

The next day they reach the ranch and are hired. George pretends that Lennie is his cousin, not his friend.

They meet Curley and Candy. Candy tells George and Lennie that Curley is the Boss's son, and has just got married. Candy tells them that Curley's wife is a 'tart' and Curley is always looking for a fight. George warns Lennie to stay away from Curley and his wife.

George and Lennie then meet Slim, Curley's wife, and Carlson.

Slim's dog has just given birth. Carlson suggests that they should offer a puppy to Candy and shoot his old dog.

Later that day George tells Slim that Lennie is his friend, not his cousin, and that he often gets them into trouble. They were fired from their last job because Lennie was accused of rape.





Slim agrees to give Lennie one of his puppies, and Carlson convinces Candy to kill his old dog. Carlson takes the dog outside.

Candy overhears Lennie and George talking about their plan to buy land. He offers them his life savings if he can live there too. They make a pact not to tell anyone of their plan.

Curley's wife appears and flirts with the men.



Carlson, Slim, Curley, and George argue. Curley looks for an easy target, to take out his anger, and picks a fight with Lennie. Lennie crushes Curley's hand.

Slim tells Curley he should tell people his hand was trapped in a machine and warns Curley that if he tries to get George and Lennie fired, he will be laughed at.



Lennie visits Crooks in his room. Crooks explains he doesn't play cards with the other because he is black. They talk about how Lennie relies on George, and about their dream to own land.

Later, Curley's wife notices bruises on Lennie and thinks he is the one who hurt her husband, not a piece of machinery. She comments on how Lennie has "guts" and is a "nice fella".

The next day Lennie accidentally kills his puppy in the barn.

Curley's wife comforts Lennie and admits that she wishes she had followed her dream of becoming a movie star instead of staying with her husband, Curley.

Lennie tells her that he likes stroking soft things and she lets him stroke her hair. He grabs her hair too tightly and Curley's wife screams out. Lennie covers her mouth and nose. He accidentally kills her.

Lennie runs away. He goes to the spot that he and George chose as a meeting place, if either of them got into trouble.

The men at the ranch find out what has happened, get together and go after Lennie. They are planning to shoot him.

George finds Lennie and tells him he is not mad at him. George reminds Lennie about their dreams of owning a farm and looking after rabbits.

The group of men get closer. George chooses to kill Lennie out of mercy and shoots him in the back of the head.



Lighting, Sound Effects and Other Content

Content warnings throughout the show - implications that Lennie hurt a woman, reference to rape, ableist language, references to a dead mouse, killing/shooting animals, swearing, references to Curley's wife being a "tart", "bitch", "tramp", outdated/racist language used to refer to Crooks.

[For a full list of content warnings please visit the show webpage.](#)

<u>Effect / Content</u>	<u>Approx Timing (Act 1)</u>
George lights a match and there is a small campfire made on stage	Approx 9.5 mins in
Dog appears on stage. This is not a real dog and is represented by a puppet.	Approx 27 mins in
Dog appears on stage.	Approx 47 mins 30 secs in
Carlson has a gun in his hand. He takes the dog off stage which implies he's going to shoot it.	Approx 53 mins in
Carlson walks back on stage holding a gun	Approx 60 mins in
Curley picks a fight with George and the Lennie. Lennie injures Curley (there is some fake blood used)	Approx 1 hour 16 mins in
<u>Effect / Content</u>	<u>Approx Timing (Act 2)</u>
Lennie stands up and shouts at Crooks who falls onto the bed	Approx 6 mins 30 sec in
George grabs Curley's wife by the arm and shortly after he raises his hand to hit her. He stops when The Boss walks in. The Boss then hits Curley's wife.	Between 18-19 mins in

Lighting, Sound Effects and Other Content

<u>Effect / Content</u>	<u>Approx Timing</u>
The Boss grabs George and throws him out of the room.	Approx 19 mins 30 secs in
Lennie is in the barn and is holding a dead puppy.	Approx 21 mins in
Lennie is stroking Curley's wifes hair and begins to pull it too hard.	Approx 31 mins 30 secs in
Curley's wife screams, Lennie covers her mouth and then accidentally breaks her neck. There is a loud 'neck breaking' sound.	Approx 32 mins in
All of the men leave the stage and then come back on. Curley has a gun in his hand	Approx 40 mins in
Lennie buries the dead puppy	Approx 42 mins in
The men come on the stage, looking for Lennie. Some of them have guns/shotguns	Approx 42 mins 30 sec in
<p>George stands up behind Lennie (who is seated) and points a gun at his head</p> <p>A few seconds later there is a loud gun shot and George shoots Lennie</p>	Approx 47 mins in

Relaxed Performance

There is a relaxed performance of 'Of Mice and Men' on Saturday 15th March at 2pm.

During the relaxed performance the lights inside the theatre will be a bit brighter than usual. We don't mind if you need to get up, move around a little bit or leave the theatre for a break.

There will be a quiet space on the First Floor should you need it.

If you would like to arrange a pre-show visit to the theatre, to familiarise yourself with the space, please contact paul.bennett@hulltruck.co.uk or call 01482 488208.

Sensory Items

We have a small number of ear defenders available to loan (suitable for baby, toddler and adult) which can be useful for patrons with auditory sensitivities.

We also have a small number of wobble cushions and weighted lap blankets available for loan, along with a range of sensory toys.

Please feel free to bring with you any items that usually assist in coping with busy or noisy environments.

We hope that you enjoy the show and your visit to
Hull Truck Theatre.